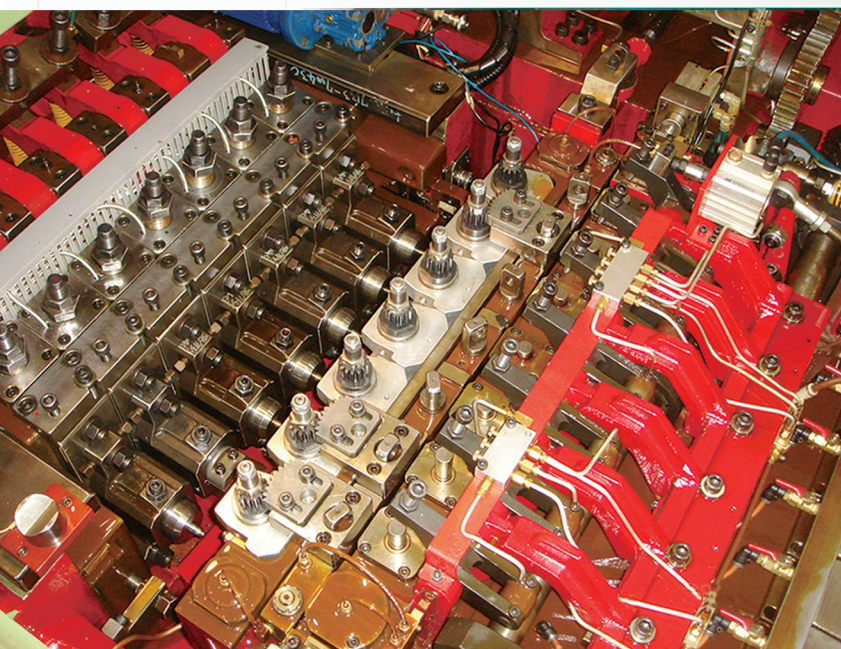




**YESWIN** MACHINERY CO., LTD. (TAIWAN)

**友信機械股份有限公司**



**友誼 · 服務 · 品質 · 誠信**

**YES**  
*Yes, we will **Win** on friendship by*  
*quality, service and sincerity* **Win**



## **BOLT FORMER 3 / 4 / 5 STATION SERIES** **3 / 4 / 5 模螺絲成型機**

### ■ *Standard Length (YBF) / Double-Length (YDB) / Ultra-Length (YUB)*

- YBF series bolt formers are capable to produce M3-M30 bolts.
- YDB series is suitable to make double-length bolts
- YUB series is suitable to make ultra-length bolts.

### ■ **標準型YBF / 加長型YDB / 超長型YUB**

標準型螺絲成型機，分為三模與四模，可生產M3- M30螺絲；  
選擇加長型或超長型車型，可生產更長的螺絲。



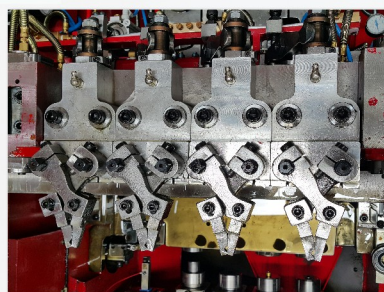
4/8極馬達搭配三段變速(標準)  
Gear box with 4/8 pole motor for 6-step speed change. (standard)



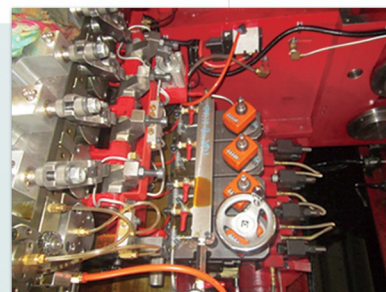
離合器可蓄能便於吋動，變頻器  
可無段變速調整(選配)  
Air clutch for retaining the fly  
wheel power when performing jog  
function. (Optional)



立式整料台(選配)  
Wire straighten stand. (Optional)



氣壓式夾仔台(選配)  
Pneumatic Transfer Mechanism for precise  
clamping and stable transfer. (Optional)



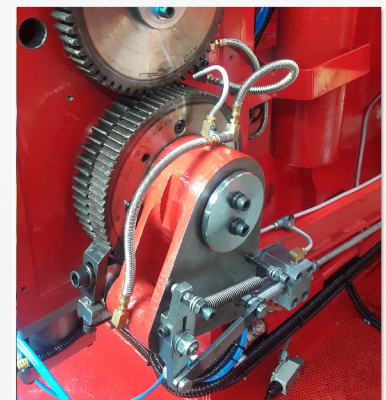
後托手輪調整(選配)  
K.O. length adjusted by hand-wheel,  
saving time from tooling changing.  
(Optional)



彈簧式夾仔台(標準)  
Spring transfer mechanism for quickly  
and securely gripping blanks.  
(Standard for small models.)



擋料手輪調整(選配)  
Stopper length adjusted by  
hand-wheel. (Optional)



插齒送料(標準)  
Ratchet gear feeding mechanism.  
(standard)



# PARTS FORMER 5 / 6 / 7 STATION SERIES

## 5 / 6 / 7 模特殊零件成型機

YNP/YBP series is upgraded model than bolt former. Parts former supports higher forging power and bigger cutting diameter. With more spatial punch and die space, machines are able to make parts with complicated shapes.

**YNP/YBP系列較一般螺絲成型機壓造力高、切斷直徑大、以及更大的公、母模空間，特別適合生產特殊零件**



後托伺服調整 (選配)

K.O. length Controlled by servo motors for easy and precise adjustment. With HMI touch panel for easier tooling set-up and monitoring the current position & length of each station. (Optional)



擋料手輪調整 (標準)

Stopper length can be easily adjusted by hand-wheel. (Standard)



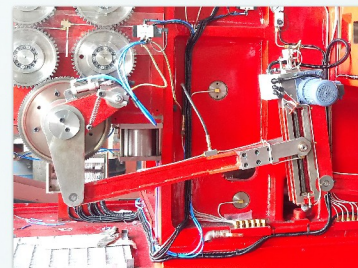
離合器可蓄能便於吋動並可依產品無段變速調整 (標準)

Air clutch for retaining the fly wheel power when performing jog function. (Standard)



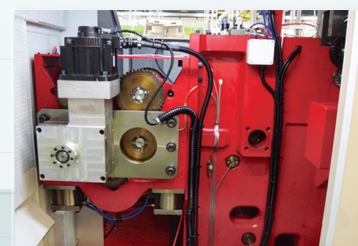
翻轉式夾仔台可翻轉胚料，以利複雜的成型變化

Universal Rotary Transfer for forging parts with complicated shapes. (standard)



電動送料長度調整 (選配)

Digital Feeding Length Control for easier and quicker feeding length adjustment. (Optional)



伺服送料調整 (選配)

Servo Feeding Adjustment for micro and precise length control. (optional)



### ■ Nut Parts Formers (YNP)/ Bolt Parts Formers (YBP)

- YNP series is for making short & complicate parts.
- YBP series is for making long & complicated parts.
- Both types can produce high-precision components or special fastener.

### ■ 短尺寸YNP/長尺寸 YBP

特殊零件成型機分為五模、六模、七模，及短尺寸與長尺寸零件成型機，用於生產精密度較高、較特殊之零件。

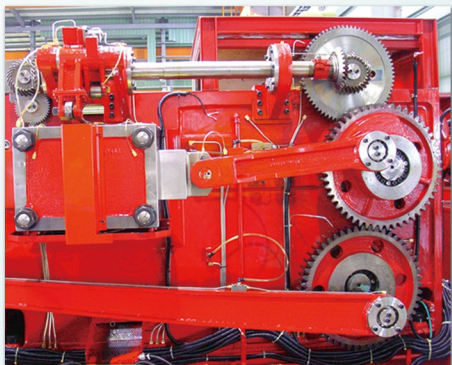






## MORE OPTIONAL DEVICES

### 其它選配裝置



夾仔台傳動機構可換至切刀側，提供操作者更寬廣的操作空間，使模具取及更容易。

Transfer transmission mechanism is switched to cutter side, so as to have more space to approach machine & tooling for operation.

可調整式PKO: 可各別調整PKO頂出長度與時間，有助模具的調整。

The adjustable P.K.O. mechanism allows to extend P.K.O. length and adjust timing individually, and to facilitate tooling adjustment for more variety of products.



主滑板後翼設計，提昇產品之穩定性，使用JIS FCD60材質。

公模座加裝鋼圈，使用SKD11材質。

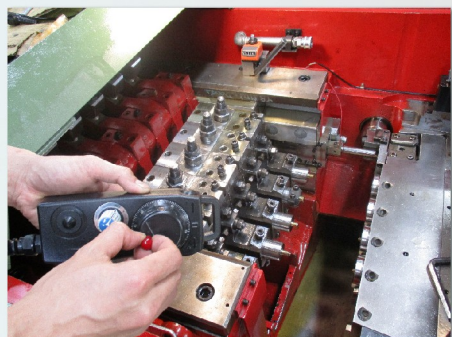
Over-arm design for main slider, made of spheroidal-graphite iron (JIS FCD 60), provides high stability and accurate movement.

Punch block with sleeve made of SKD11.



臥式線架搭線徑 $\Phi 15$ 以上適用

Horizontal wire stand is suitable for wire dia. 15 and above.



電子手輪以微調方式使車台作動

Digital hand-wheel controller allows machine to run in fine-tuning mode and helps tooling changing/adjusting or blanks testing.



## MORE OPTIONAL DEVICES

### 其它選配裝置



#### 全罩式規格， 也可加裝防噪音護蓋

Full cover design and  
Sound proof cover.



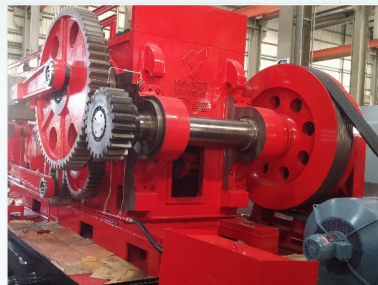
#### 共軛凸輪（選配）

Conjugate Cam for stabilizer transfer  
movement of machine high speed  
operation.



#### 大張開夾仔台

Wide Angle Transfer  
mechanism for producing  
large headed-bolts.



#### 備軸傳動適用於大型車台， 使傳動更有力

Rear shaft applied for big models,  
provides higher transmission  
power.



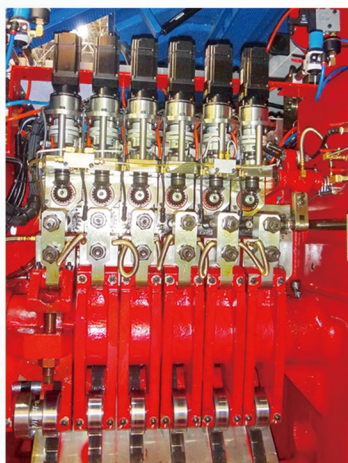
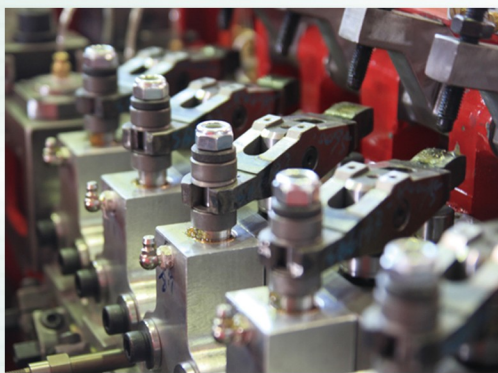
## BUSINESS CONCEPTS

### 經營理念

Yeswin follows up CEO Mr. Chu's ideas—friendship, quality, service, and sincerity—to run the business. For building up a long-term friendship with customers, Yeswin considers quality as the most important asset for enterprise and insists on making machine parts in Taiwan. We offer prompt and professional service and treat customers by sincerity for credibility.

友信企業，秉持著董事長朱啟禮先生的經營理念「友誼、品質、服務、誠信」，貫徹企業經營：為了與客戶建立長期友誼關係，以「品質與值量是一間企業最重要的資產與生命」的觀念，堅持全部元件台灣製造，以維護品質；並提供及時專業的服務，以誠待客、以信筑名。





QUALITY

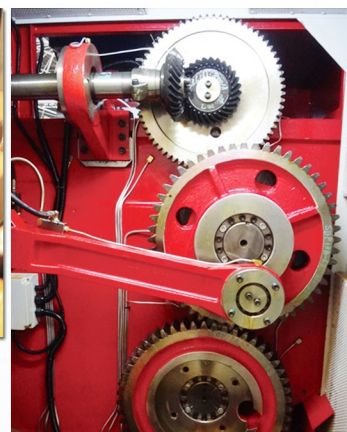
FRIENDSHIP



SINCERITY



SERVICE



YESWIN MACHINERY CO., LTD. (TAIWAN)  
**友信機械股份有限公司**

71741 台南市仁德區太子路81號

NO.81 TAIZI RD., RENDE DISTRICT, TAINAN CITY, TAIWAN

Tel : +886-6-2729939

Fax: +886-6-2721236

E-mail: [yeswin@twyeswin.com](mailto:yeswin@twyeswin.com)

<http://www.twyeswin.com/>